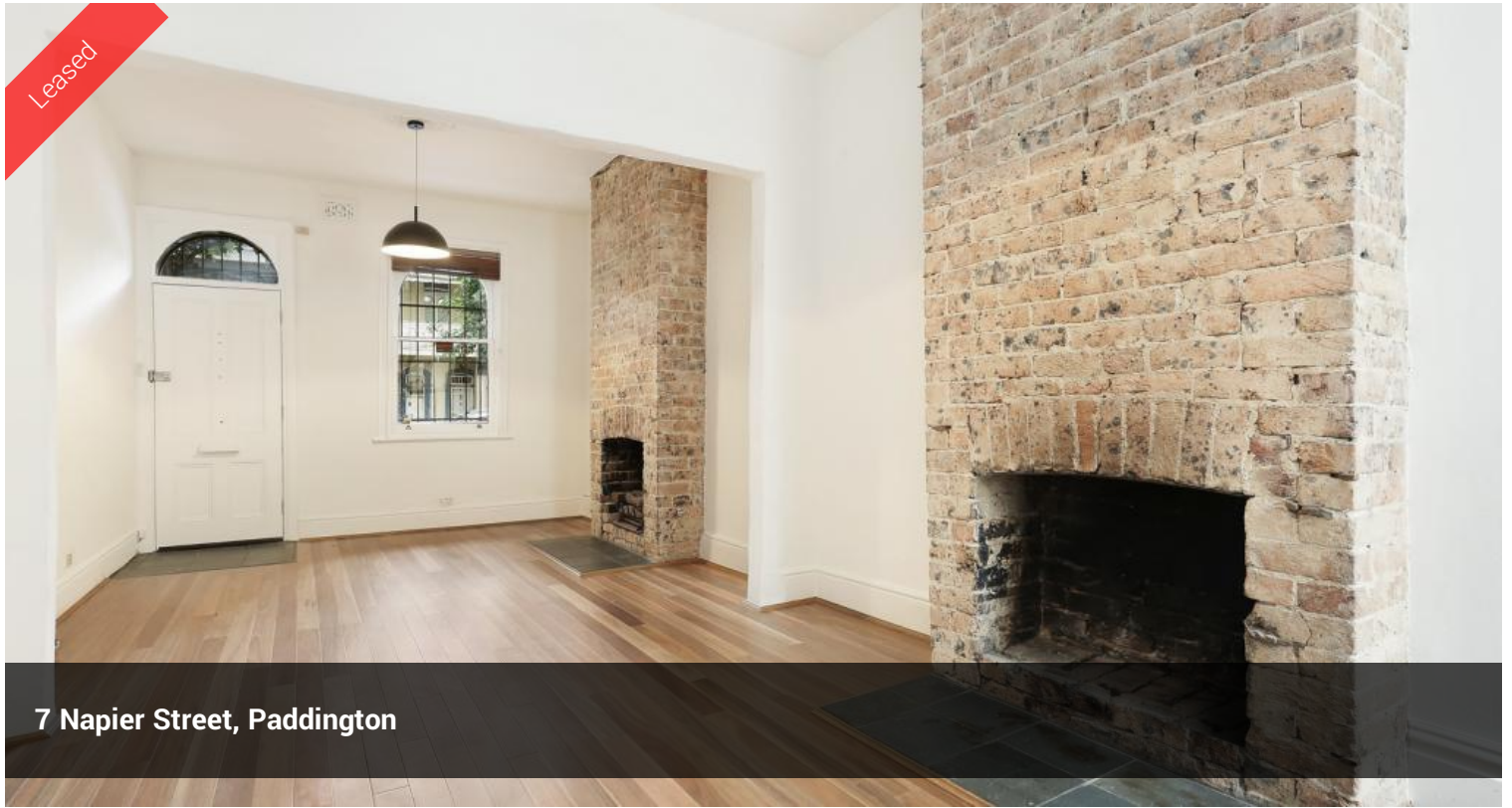


Leased



7 Napier Street, Paddington



GORGEOUS VICTORIAN STYLE TERRACE IN A TRANQUIL STREET

PLEASE NOTE: Please contact our office on 02 9363 1100 to arrange an inspection.

Recently renovated two-level Victorian style terrace peacefully situated in a tree-lined street of Paddington. Only a short stroll to the Paddington's vibrant culinary, boutique eateries and public transport. Tucked away in a peaceful pocket of Paddington, including:

- Split two level Victorian style terrace with natural light
- Recently painted and freshly maintained carpet throughout
- Gallery style kitchen with stylish timber benchtops and dishwasher
- Fluid open living and dining area, freshly polished timber floors and ornamental fireplaces
- Two upstairs bedrooms, both with built in wardrobes and new carpet
- Master bedroom opening to balcony with peaceful outlook
- Fully tiled bathroom with open overhead shower

 2  1

Price	\$775 Per Week
Property Type	Rental
Property ID	1146

Agent Details

Office Details

Double Bay
2/12 Cross Street Double Bay NSW
2028 Australia
02 9363 1100

Lisa Steele

- Conceal laundry room that leads out to a courtyard
- Seamless flow to private low maintenance paved courtyard
- Walk to Moore Park and Oxford Street lifestyle precincts

Available mid March 2021!

INSPECT NOW!

APPLY NOW BY ENTERING THIS LINK INTO YOUR BROWSER: tapp.com.au/lisasteele

The above information provided has been furnished to us by the vendor/s. We have not verified whether or not that information is accurate and do not have any belief in one way or the other in its accuracy. We do not accept any responsibility to any person for its accuracy and do no more than pass it on. All interested parties should make and rely upon their own inquiries in order to determine whether or not this information is in fact accurate.